



Parts Manual

Mfg. No: 5902135
FB3000 Hurricane Series Stand-On
Debris Blower (FB3000, 7500, V35, NA)

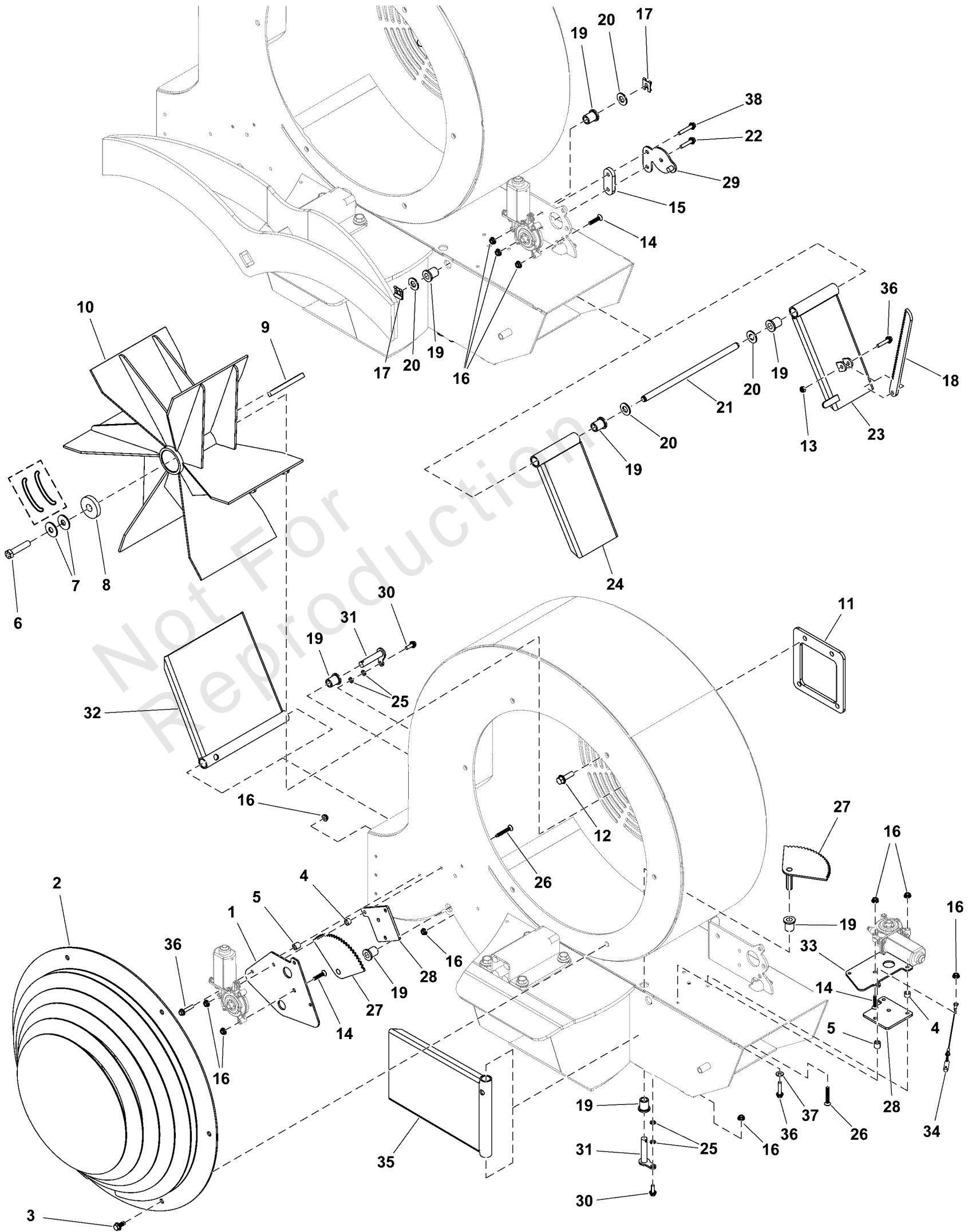
| Model Components | Page |
|---|-------------|
| Blower Group..... | 4 |
| Decal Group - Brand and Model..... | 6 |
| Decal Group - Safety and Operation..... | 8 |
| Electrical Group S/N: 4002219159 and Above..... | 10 |
| Electrical Schematic S/N: 4002219159 and Above..... | 12 |
| Engine Group..... | 14 |
| Fuel Tank and Hose Group..... | 16 |
| Handle Bar Group..... | 18 |
| Hydraulic Group..... | 20 |
| Instrument Control Panel Group..... | 22 |
| Main Frame Group..... | 24 |
| Motion Control Group..... | 26 |
| Parking Brake Group S/N: 4002219159 and above..... | 28 |
| Wheel and Tire Group..... | 30 |
| Torque Specification Chart..... | 32 |

Not For
Reproduction

Blower Group

Note: Unless noted otherwise, use the standard torque specifications

Mfg. No: 5902135



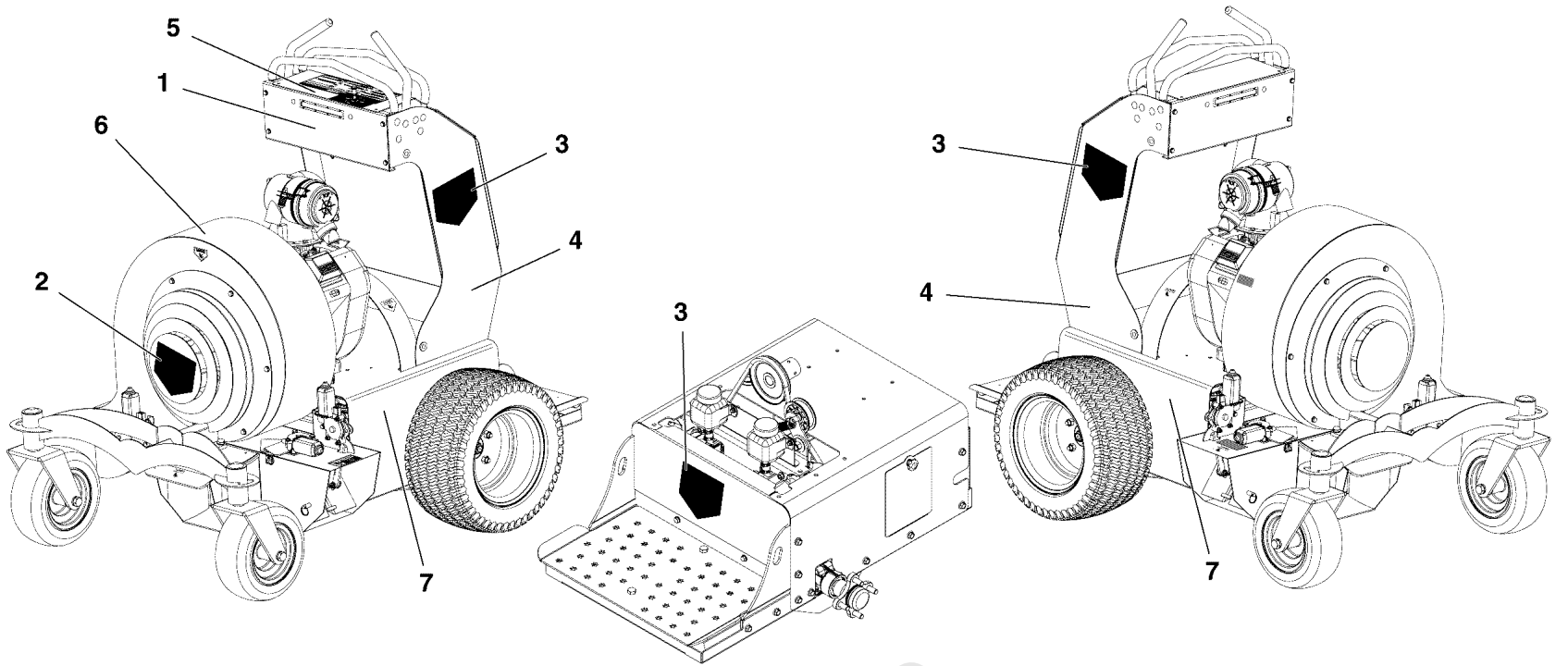
Blower Group

| REF NO | PART NO | QTY | DESCRIPTION |
|--------|-------------|-----|---|
| 1 | 5107338AFS | 1 | PLATE |
| 2 | 5418554AFS | 1 | COVER |
| 3 | 703354 | 6 | SCREW, 5/16-18 |
| 4 | 5107396FS | 4 | SPACER |
| 5 | 5106902FS | 3 | SPACER |
| 6 | 5107308FS | 1 | BOLT -(Torque impeller mounting bolt to 140 ft-lbs (190 Nm)) |
| 7 | 5108105FS | 1 | WASHER, BEVELED |
| 8 | 5107199FS | 1 | WASHER |
| 9 | 5106823FS | 1 | KEY |
| 10 | 5419590FS | 1 | IMPELLER |
| 11 | 5107511FS | 1 | PLATE, Spacer |
| 12 | 5025390X8FS | 4 | BOLT |
| 13 | 5025095SM | 1 | NUT, 1/4-20 HEX NYLON |
| 14 | 5106874FS | 4 | SCREW |
| 15 | 5107334AAFS | 1 | PLATE, Spacer |
| 16 | 5025126FS | 15 | NUT |
| 17 | 5106951FS | 2 | CLIP |
| 18 | 5107335FS | 1 | PLATE |
| 19 | 5106943FS | 8 | BUSHING |
| 20 | 5025158SM | 3 | WASHER, 1/2" SAE |
| 21 | 5107281FS | 1 | ROD, SUPPORT |
| 22 | 5106873FS | 1 | BOLT |
| 23 | 5107483FS | 1 | DEFLECTOR |
| 24 | 5107772FS | 1 | DEFLECTOR |
| 25 | 5025169FS | 4 | WASHER |
| 26 | 5106903FS | 4 | SCREW |
| 27 | 5107339AAFS | 2 | DEFLECTOR |
| 28 | 5107332AAFS | 2 | PLATE, SPACER |
| 29 | 5107333FS | 1 | KEEPER |
| 30 | 5106872FS | 2 | BOLT |
| 31 | 5107337FS | 2 | PIN |
| 32 | 5107496FS | 1 | DEFLECTOR |
| 33 | 5107329AFS | 1 | PLATE -(Plate only, motor shown for reference only.) |
| 34 | 5107886FS | 1 | PIN |
| 35 | 5107468FS | 1 | DEFLECTOR |
| 36 | 5106919FS | 4 | BOLT |
| 37 | 703332 | 1 | WASHER |
| 38 | 5025668FS | 1 | BOLT |

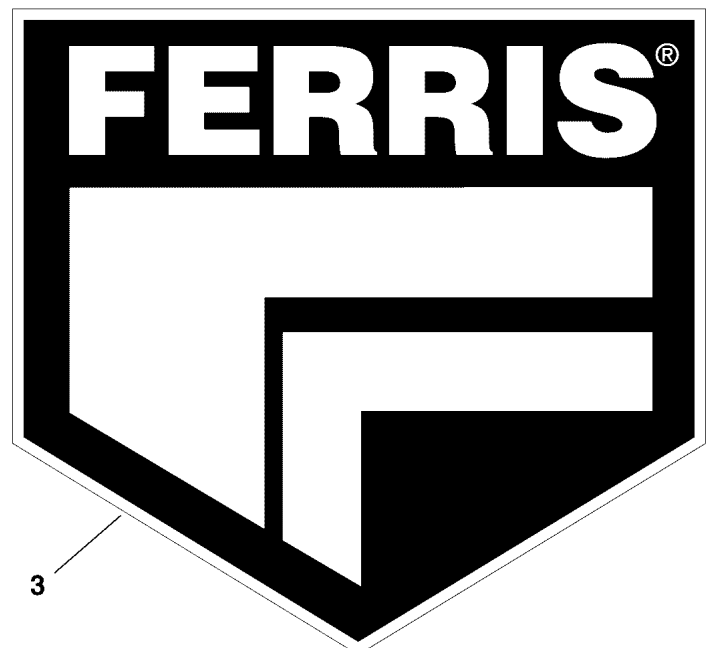
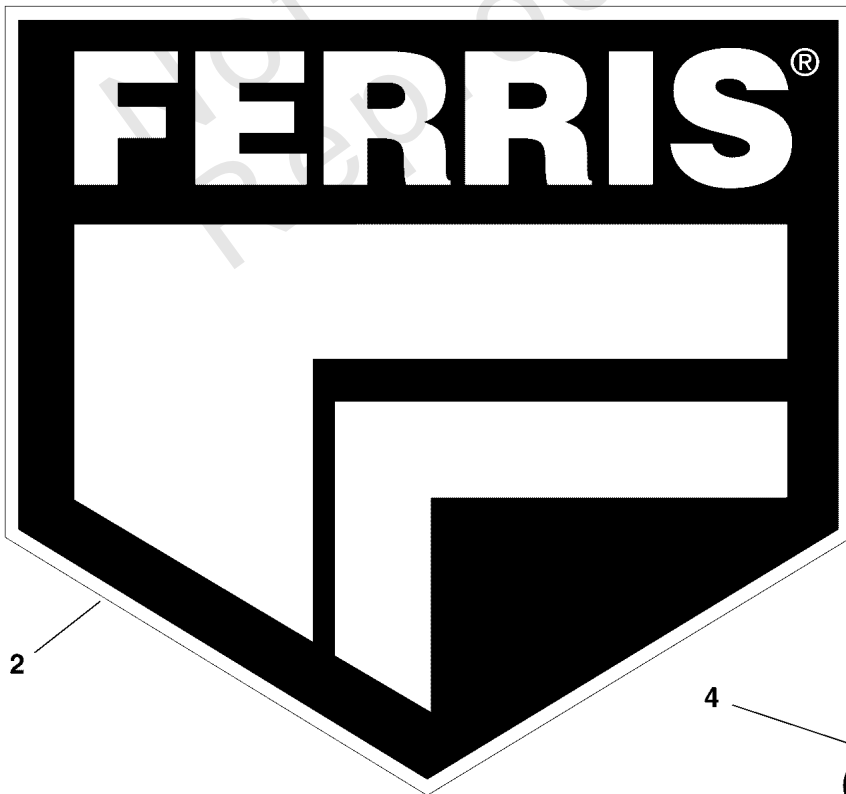
Decal Group - Brand and Model

Note: Unless noted otherwise, use the standard torque specifications

Mfg. No: 5902135



1 **FERRIS**



Decal Group - Brand and Model

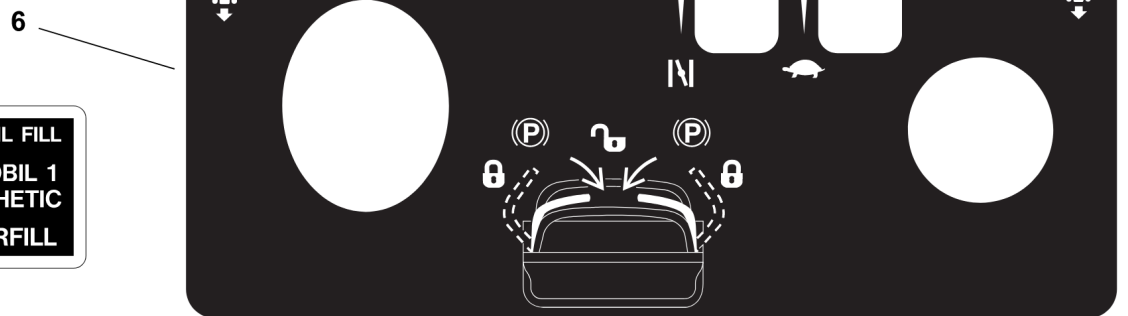
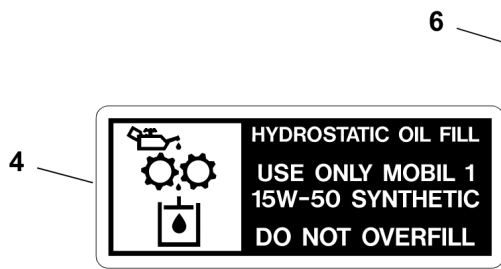
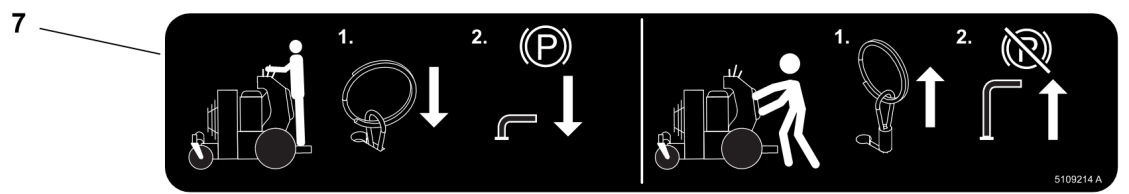
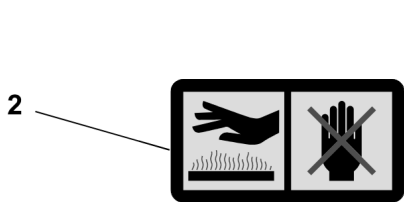
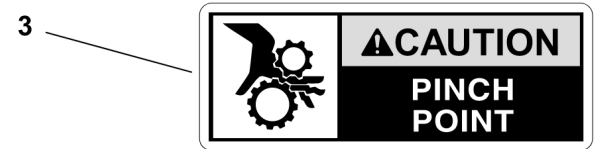
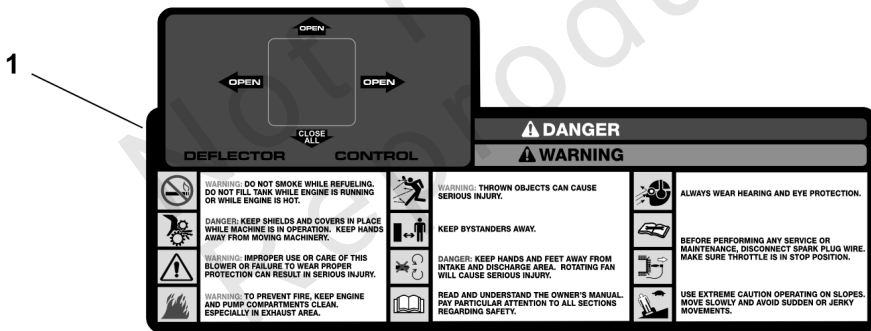
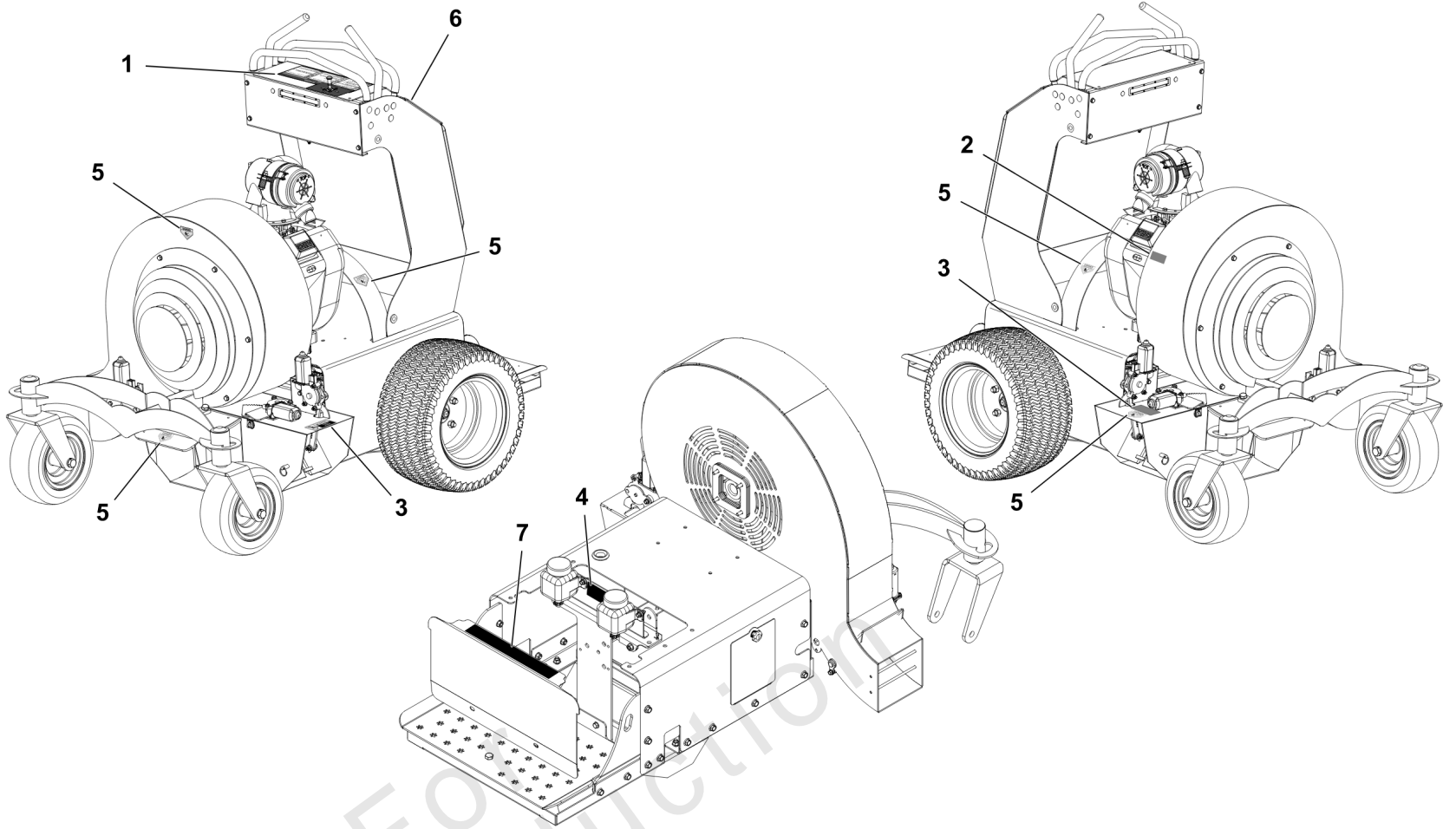
| REF NO | PART NO | QTY | DESCRIPTION |
|--------|------------|-----|-----------------|
| 1 | 5107360FS | 1 | DECAL, Brand |
| 2 | 5107361FS | 1 | DECAL, Brand |
| 3 | 5107357FS | 3 | DECAL, Brand |
| 4 | 5107584FS | 2 | DECAL, Model |
| 5 | 5107362FS | 1 | DECAL, Controls |
| 6 | 5106769FS | 1 | DECAL |
| 7 | 80082701FS | 2 | DECAL, BRAND |

Not For Reproduction

Decal Group - Safety and Operation

Note: Unless noted otherwise, use the standard torque specifications

Mfg. No: 5902135



Decal Group - Safety and Operation

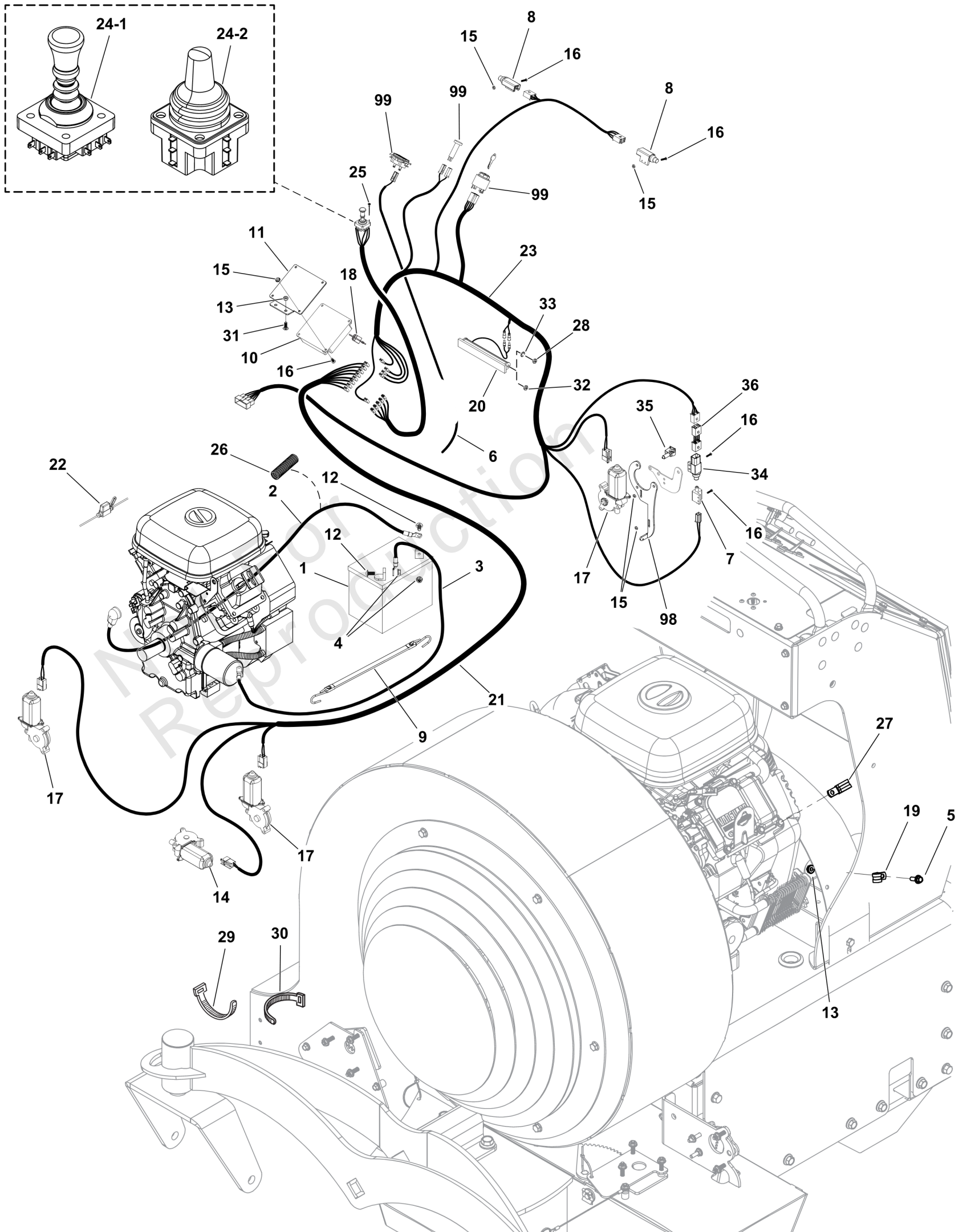
| REF NO | PART NO | QTY | DESCRIPTION |
|---------------|----------------|------------|-----------------------------|
| 1 | 5107509FS | 1 | DECAL, CONTROLS |
| 2 | 5106771FS | 1 | DECAL, WARNING, HOT SURFACE |
| 3 | 5106773FS | 2 | DECAL, Warning/Safety |
| 4 | 5106774FS | 1 | DECAL |
| 5 | 5106775FS | 5 | DECAL |
| 6 | 84008754 | 1 | DECAL, Controls |
| 7 | 5109214FS | 1 | DECAL, BRAKE, PARK |

Not For Reproduction

Electrical Group S/N: 4002219159 and Above

Note: Unless noted otherwise, use the standard torque specifications

Mfg. No: 5902135



Electrical Group S/N: 4002219159 and Above

| REF NO | PART NO | QTY | DESCRIPTION |
|--------|--------------|-----|---|
| 1 | ----- | 1 | BATTERY, 11U1L, 350 CCA -(BCIU1, 350 CCA) |
| 2 | 5107244FS | 1 | CABLE, BATTERY, RED |
| 3 | 5107245FS | 1 | CABLE, BATTERY, BLACK |
| 4 | 5025127SM | 2 | NUT, 5/16-18 HEX SERR |
| 5 | 5106872FS | 2 | BOLT |
| 6 | 5107043FS | 1 | HARNESS, WIRING -(End without terminal is wrapped around spark plug wire and secure with wire tie.) |
| 7 | 5021769SM | 1 | SWITCH, PLUNGER, N.C. |
| 8 | 5106950FS | 2 | SWITCH |
| 9 | 5106918FS | 1 | STRAP, Battery |
| 10 | 5601264 | 1 | KIT, RELAY, CONTROL MODULE -(Includes reference number #18). |
| 11 | 5107407AAFS | 1 | MOUNT |
| 12 | 5025145X6SM | 2 | BOLT, 5/16-18 X 3/4", |
| 13 | 5025126FS | 4 | NUT |
| 14 | 5106953FS | 1 | MOTOR |
| 15 | 1928919SM | 12 | NUT-HEX & WASHER ASMY |
| 16 | 5106875FS | 12 | SCREW (#10-32 X 3/4, ALLEN, SS) |
| 17 | 5106952FS | 3 | DEFLECTOR, Motor |
| 18 | 5107310FS | 1 | BREAKER, CIRCUIT, 15A |
| 19 | 5107053 | 2 | CLAMP, VINYL INSULATED, .50 |
| 20 | 84006903 | 1 | HEADLIGHT ASSEMBLY |
| 21 | 5107313FS | 1 | HARNESS, WIRING |
| 22 | 5107311FS | 1 | HOLDER, FUSE |
| 23 | 5107312FS | 1 | HARNESS, WIRING |
| 24-1 | 5601265 | 1 | KIT, JOYSTICK UPDATE -(S/N: 4001275566 and below) |
| 24-2 | 5108766FS | 1 | KIT, Joystick -(S/N: 4001275567 and above) |
| 25 | 5106875FS | 4 | SCREW (#10-32 X 3/4, ALLEN, SS) |
| 26 | 5050927X17P5 | 1 | WIRE LOOM, 3/8 ID X 17.5 IN |
| 27 | 5107987FS | 2 | CLAMP |
| 28 | 5025672 | 2 | NUT, HEX, M5X.8MM, NYLON INSERT -(For headlights with 5MM studs)(Torque headlight mounting nut to 16-19 in-lbs.) |
| 29 | 5021029SM | 2 | TIE, Cable 11" Long |
| 30 | 5021030SM | 8 | TIE WRAP, 5-1/2" LONG |
| 31 | 703575 | 2 | BOLT, 1/4-20X.750, SQ |
| 32 | 5025669 | 2 | NUT, HEX, M6-1, NYLON INSERT -(For headlights with 6MM studs) |
| 33 | 5025673 | 2 | WASHER, 5MM, STAR, CZ -(For headlights with 5MM studs) |
| 34 | 84008626 | 1 | SWITCH, Sealed |
| 35 | 5104736FS | 1 | CLIP |
| 36 | 84008627 | 1 | WIRE HARNESS, JUMPER, BRAKE SWITCH |
| 98 | ----- | 0 | Refer to: Parking Brake Group |
| 99 | ----- | 0 | Refer to: Instrument Control Panel Group |

Electrical Schematic S/N: 4002219159 and Above

Note: Unless noted otherwise, use the standard torque specifications

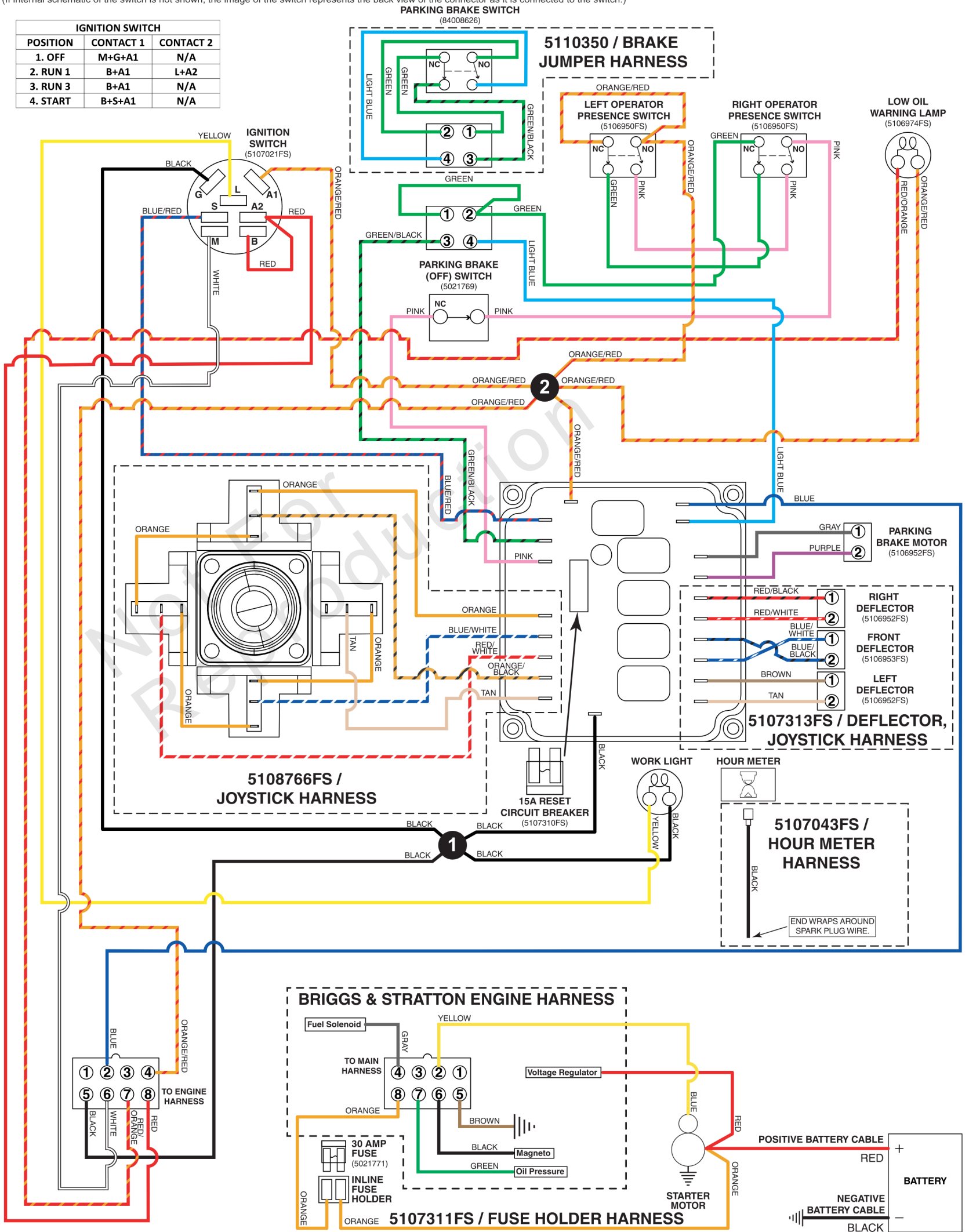
Mfg. No: 5902135

5107312FS / MAIN WIRE HARNESS - BRIGGS & STRATTON 613477 ENGINES

5107312B

(If internal schematic of the switch is not shown, the image of the switch represents the back view of the connector as it is connected to the switch.)

| IGNITION SWITCH | | |
|-----------------|-----------|-----------|
| POSITION | CONTACT 1 | CONTACT 2 |
| 1. OFF | M+G+A1 | N/A |
| 2. RUN 1 | B+A1 | L+A2 |
| 3. RUN 3 | B+A1 | N/A |
| 4. START | B+S+A1 | N/A |



Electrical Schematic S/N: 4002219159 and Above

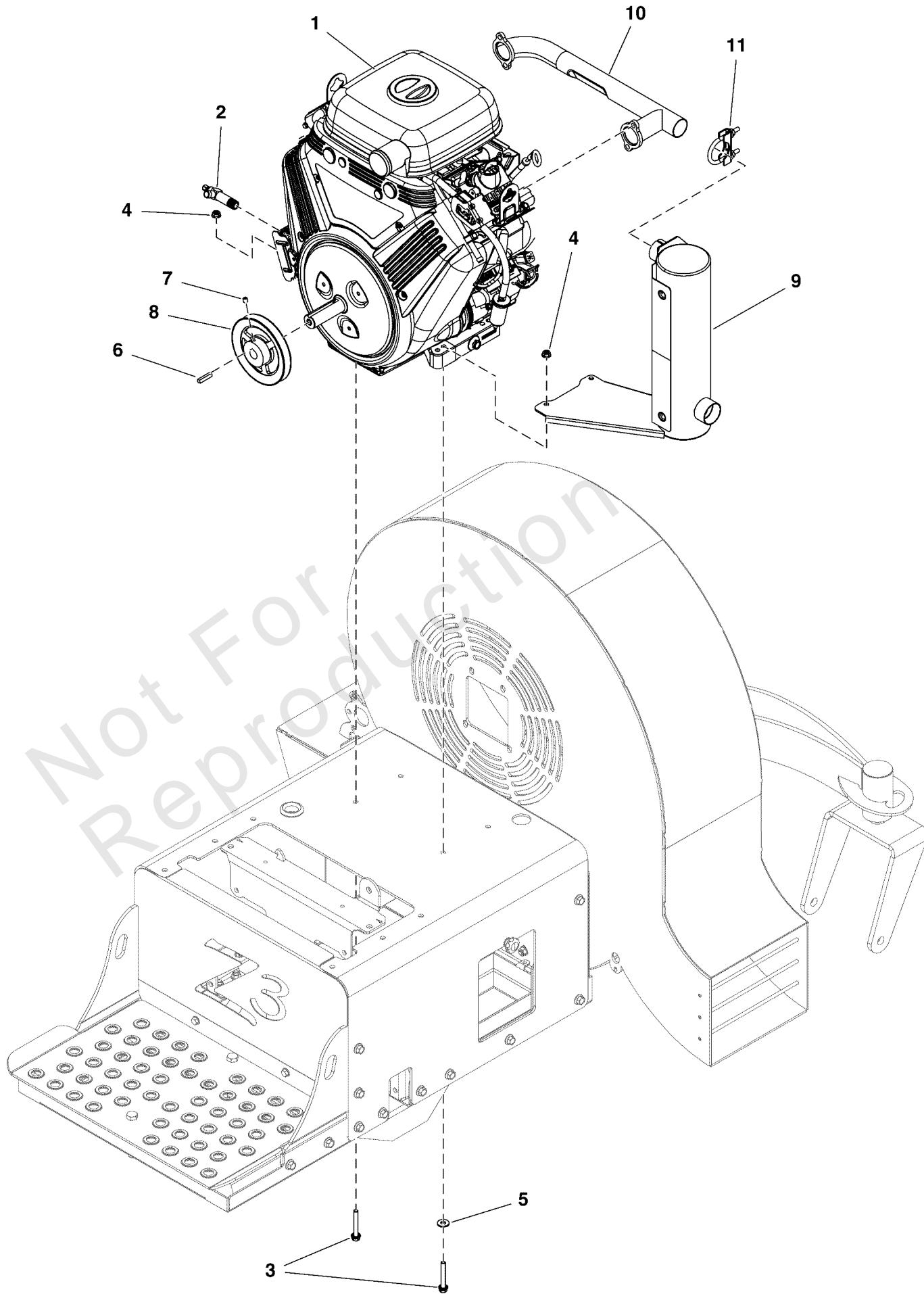
| REF NO | PART NO | QTY | DESCRIPTION |
|-----------|-----------|-----|------------------------------------|
| 5107312FS | 5107312FS | 1 | HARNESS, WIRING |
| 5108766FS | 5108766FS | 1 | KIT, Joystick |
| 5107313FS | 5107313FS | 1 | HARNESS, WIRING |
| 5107043FS | 5107043FS | 1 | HARNESS, WIRING |
| 5110350 | 84008627 | 1 | WIRE HARNESS, JUMPER, BRAKE SWITCH |
| 5107311FS | 5107311FS | 1 | HOLDER, FUSE |

Not For Reproduction

Engine Group

Note: Unless noted otherwise, use the standard torque specifications

Mfg. No: 5902135



Engine Group

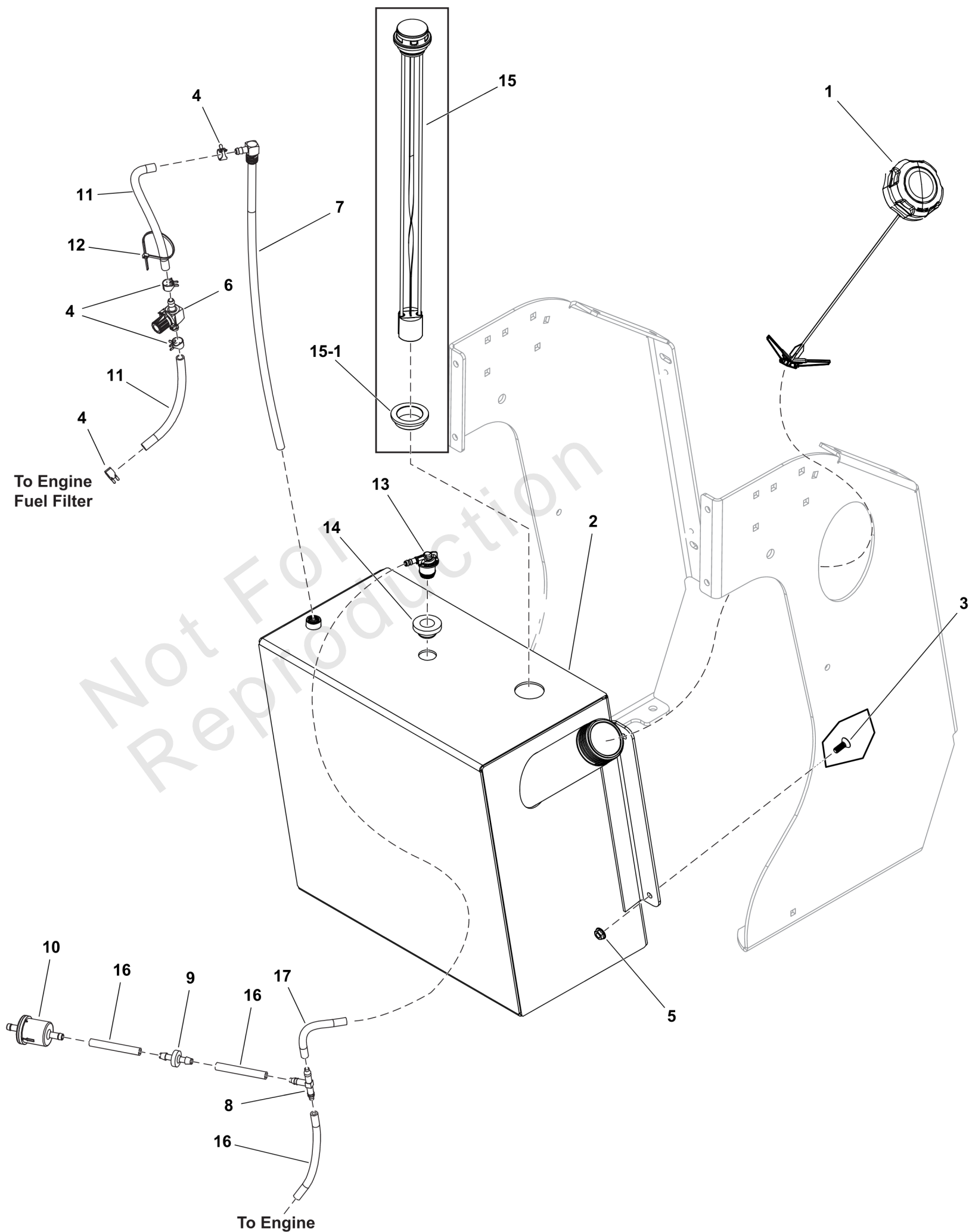
| REF NO | PART NO | QTY | DESCRIPTION |
|--------|--------------|-----|---|
| 1 | ----- | 1 | ENGINE, VANGUARD, 993cc |
| 2 | 5107284FS | 1 | VALVE, OIL DRAIN SHUT OFF |
| 3 | 5107304FS | 4 | BOLT |
| 4 | 5025127SM | 4 | NUT, 5/16-18 HEX SERR |
| 5 | 5107147 | 1 | WASHER, 5/16 FLAT, CZ |
| 6 | 5050407X10YP | 1 | KEY, 1/4 SQ X 1-1/4 |
| 7 | 1677029SM | 2 | SCREW, Set, Hex Socket Head, Cup Point, 5/16-18 x 3/8 |
| 8 | 5107285FS | 1 | PULLEY |
| 9 | 5109327FS | 1 | MUFFLER |
| 10 | 5109328FS | 1 | MANIFOLD |
| 11 | 5107305FS | 1 | CLAMP, Muffler |

Not For Reproduction

Fuel Tank and Hose Group

Note: Unless noted otherwise, use the standard torque specifications

Mfg. No: 5902135



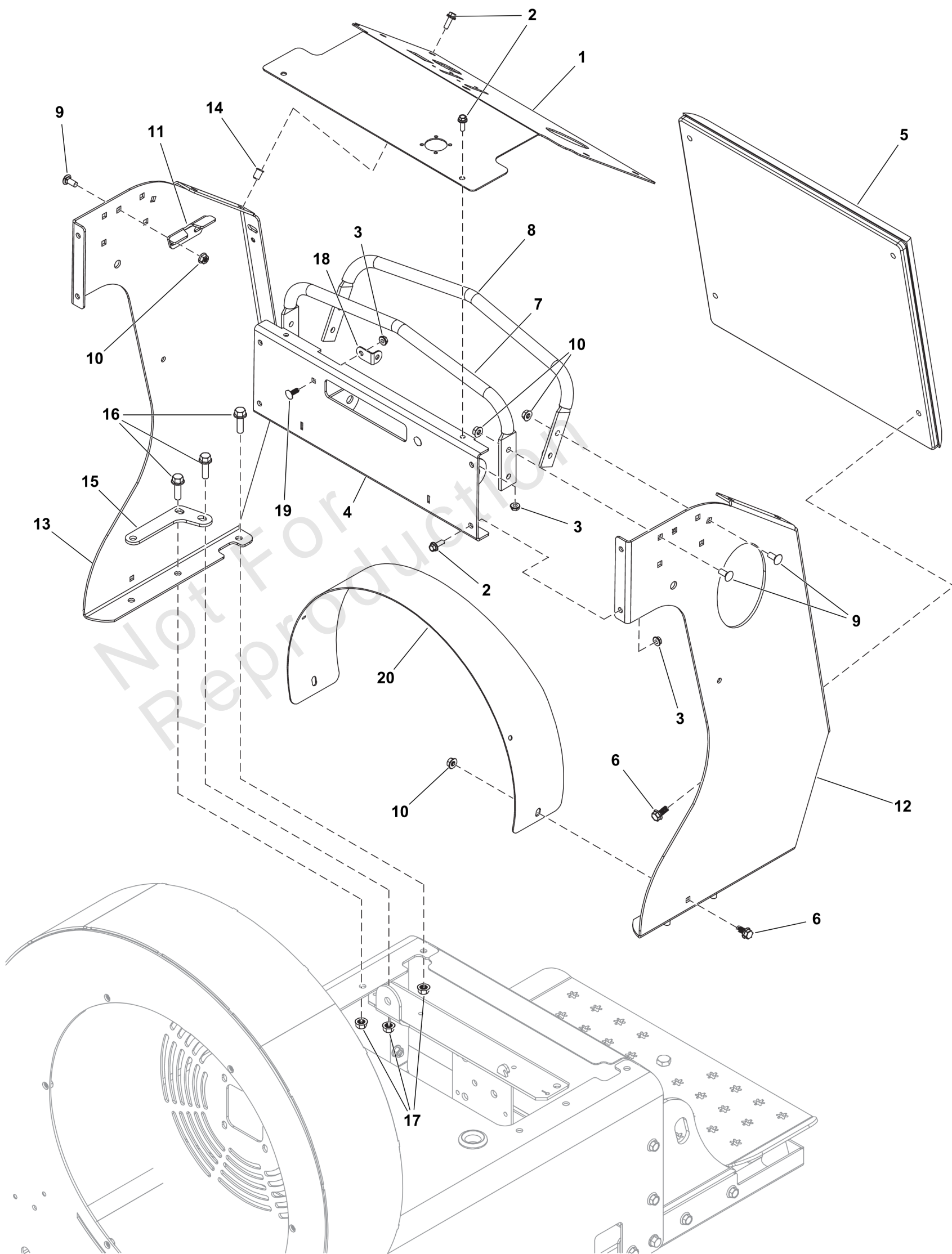
Fuel Tank and Hose Group

| REF NO | PART NO | QTY | DESCRIPTION |
|--------|---------------|-----|---|
| 1 | 84008753 | 1 | CAP, Fuel Tank |
| 2 | 84008756 | 1 | TANK, Fuel |
| 3 | 5106863FS | 4 | SCREW |
| 4 | 691038 | 4 | CLAMP, Hose |
| 5 | 5025126FS | 4 | NUT |
| 6 | 5107072FS | 1 | VALVE, Fuel Shut Off |
| 7 | 5107073FS | 1 | EXTENSION, FUEL TRANSFER TUBE |
| 8 | 5106956FS | 1 | FITTING |
| 9 | 5106955FS | 1 | VALVE, Check |
| 10 | 84001895 | 1 | FILTER, Fuel |
| 11 | 5050831X6YP | 2 | HOSE, 1/4" FUEL, 6.00 |
| 12 | 5021030SM | 1 | TIE WRAP, 5-1/2" LONG |
| 13 | 770046 | 1 | REMOTE VENT ASSEMBLY |
| 14 | 799624 | 1 | GROMMET |
| 15 | 84008752 | 1 | GAUGE, Fuel -(Includes item # 15-1). |
| 15-1 | 5105477X1 | 1 | RUBBER SEAL |
| 16 | 7700552X2P5FS | 3 | HOSE, VAPOR |
| 17 | 7700552X14FS | 1 | HOSE, Vapor -(Cut to length) |

Handle Bar Group

Note: Unless noted otherwise, use the standard torque specifications

Mfg. No: 5902135



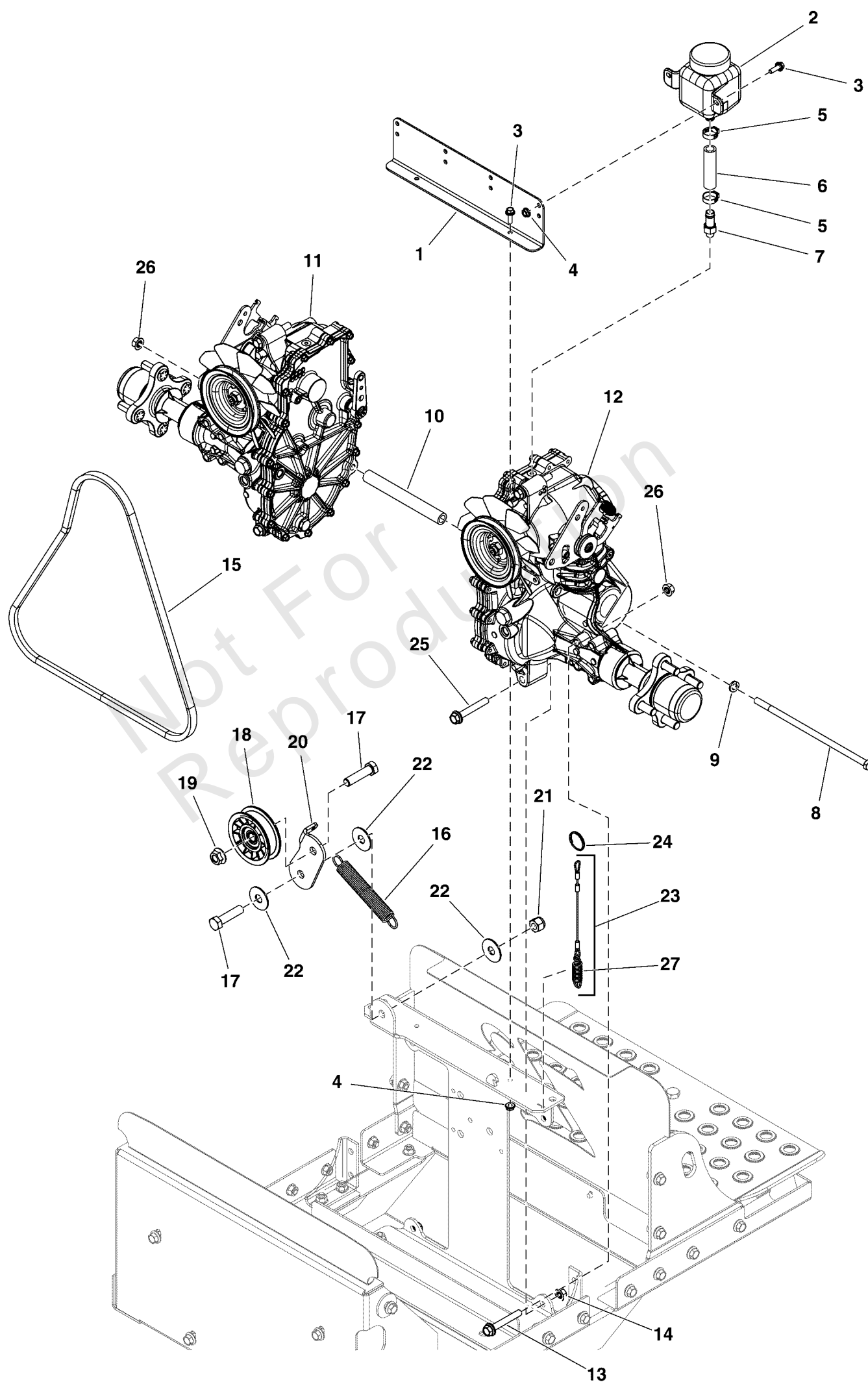
Handle Bar Group

| REF NO | PART NO | QTY | DESCRIPTION |
|--------|-------------|-----|----------------------------|
| 1 | 84008755 | 1 | PLATE, Control Panel |
| 2 | 5106872FS | 10 | BOLT |
| 3 | 5025126FS | 10 | NUT |
| 4 | 5418513AIFS | 1 | PANEL |
| 5 | 5107538FS | 1 | PAD, KNEE |
| 6 | 703354 | 6 | SCREW, 5/16-18 |
| 7 | 5107044AFS | 1 | HANDLE, FRONT |
| 8 | 5107045AFS | 1 | HANDLE, REAR |
| 9 | 5025145X6SM | 12 | BOLT, 5/16-18 X 3/4", |
| 10 | 5025127SM | 14 | NUT, 5/16-18 HEX SERR |
| 11 | 5107391FS | 2 | BRACKET |
| 12 | 84008762 | 1 | CONTROL, Tower |
| 13 | 5418578AIFS | 1 | CONTROL, TOWER |
| 14 | 5106833FS | 4 | NUT |
| 15 | 5107544AFS | 2 | PLATE |
| 16 | 5025390X8FS | 8 | BOLT |
| 17 | 5025666FS | 8 | NUT |
| 18 | 84007036 | 2 | BRACKET, L Headlight Mount |
| 19 | 703575 | 2 | BOLT, 1/4-20X.750, SQ |
| 20 | 84008765 | 1 | GUARD, Belt |

Hydraulic Group

Note: Unless noted otherwise, use the standard torque specifications

Mfg. No: 5902135



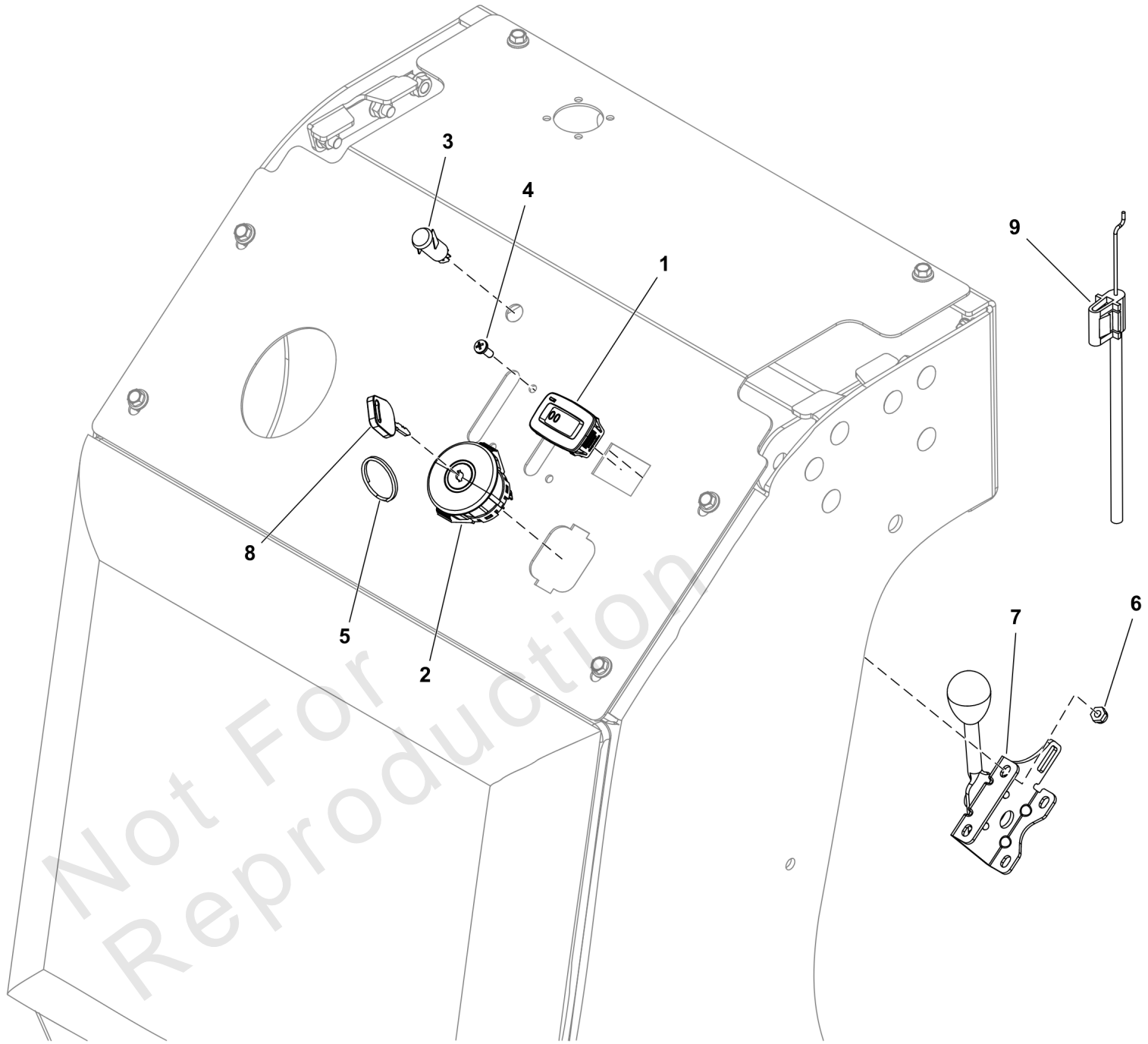
Hydraulic Group

| REF NO | PART NO | QTY | DESCRIPTION |
|--------|----------------|-----|---|
| 1 | 5107366AAFS | 1 | MOUNT, TANK |
| 2 | 5100473SM | 2 | RESERVOIR |
| 3 | 5106872FS | 6 | BOLT |
| 4 | 5025126FS | 6 | NUT |
| 5 | 5025474SM | 4 | CLAMP - HOSE |
| 6 | 5050857X2P75FS | 2 | HOSE |
| 7 | 5107224FS | 2 | FITTING |
| 8 | 5025667FS | 1 | BOLT |
| 9 | 5025156FS | 1 | WASHER |
| 10 | 5107370FS | 1 | SPACER |
| 11 | 5107227 | 1 | TRANSAXLE, ZT3100, RH, ZJ-LPRP-3A7C-19XX -(S/N: 40015467047 and below) |
| 11 | 84006961 | 1 | TRANSAXLE -(S/N: 40015467048 and above) |
| 12 | 5107222 | 1 | TRANSAXLE, ZT3100, LH, ZJ-HPRP-3A7B-19XX -(S/N: 40015467047 and below) |
| 12 | 84006962 | 1 | TRANSAXLE -(S/N: 40015467048 and above) |
| 13 | 5025670 | 4 | BOLT, HEX, 3/8-16 X 3", SER FLG GRD5, CZ |
| 14 | 5025666FS | 4 | NUT |
| 15 | 5106821FS | 1 | BELT, DRIVE |
| 16 | 5106923FS | 1 | SPRING |
| 17 | 5025017X16YP | 2 | BOLT, 1/2-13 X 2 GD5 |
| 18 | 5107103FS | 1 | PULLEY, IDLER |
| 19 | 770225 | 1 | NUT |
| 20 | 5107365AAFS | 1 | ARM, IDLER |
| 21 | 5025056FS | 1 | NUT |
| 22 | 5107348FS | 3 | WASHER |
| 23 | 5107300FS | 2 | CABLE, Hydraulic Control -(Includes item # 28.) |
| 24 | 5108012FS | 2 | KEY |
| 25 | 5106859FS | 4 | BOLT |
| 26 | 5025394SM | 5 | NUT, 3/8-16 HEX NYLOCK |
| 27 | 5106888FS | 2 | SPRING, EXTENSION |

Instrument Control Panel Group

Note: Unless noted otherwise, use the standard torque specifications

Mfg. No: 5902135



Instrument Control Panel Group

| REF NO | PART NO | QTY | DESCRIPTION |
|--------|-------------|-----|-------------------------------------|
| 1 | 5106789FS | 1 | METER, HOUR |
| 2 | 5107021FS | 1 | SWITCH, Ignition |
| 3 | 5106974FS | 1 | LIGHT, INDICATOR |
| 4 | 5025179X4SM | 4 | SCREW, #10-24 X 1/2" ROUND PHILLIPS |
| 5 | 5108012FS | 1 | KEY |
| 6 | 5025271FS | 4 | NUT |
| 7 | 5107399FS | 2 | LEVER, THROTTLE CONTROL |
| 8 | 1714054SM | 2 | KEY-IGNITIOM W/PLASTI |
| 9 | 5101890 | 2 | CABLE, THROTTLE, 31" |

Not For
Reproduction

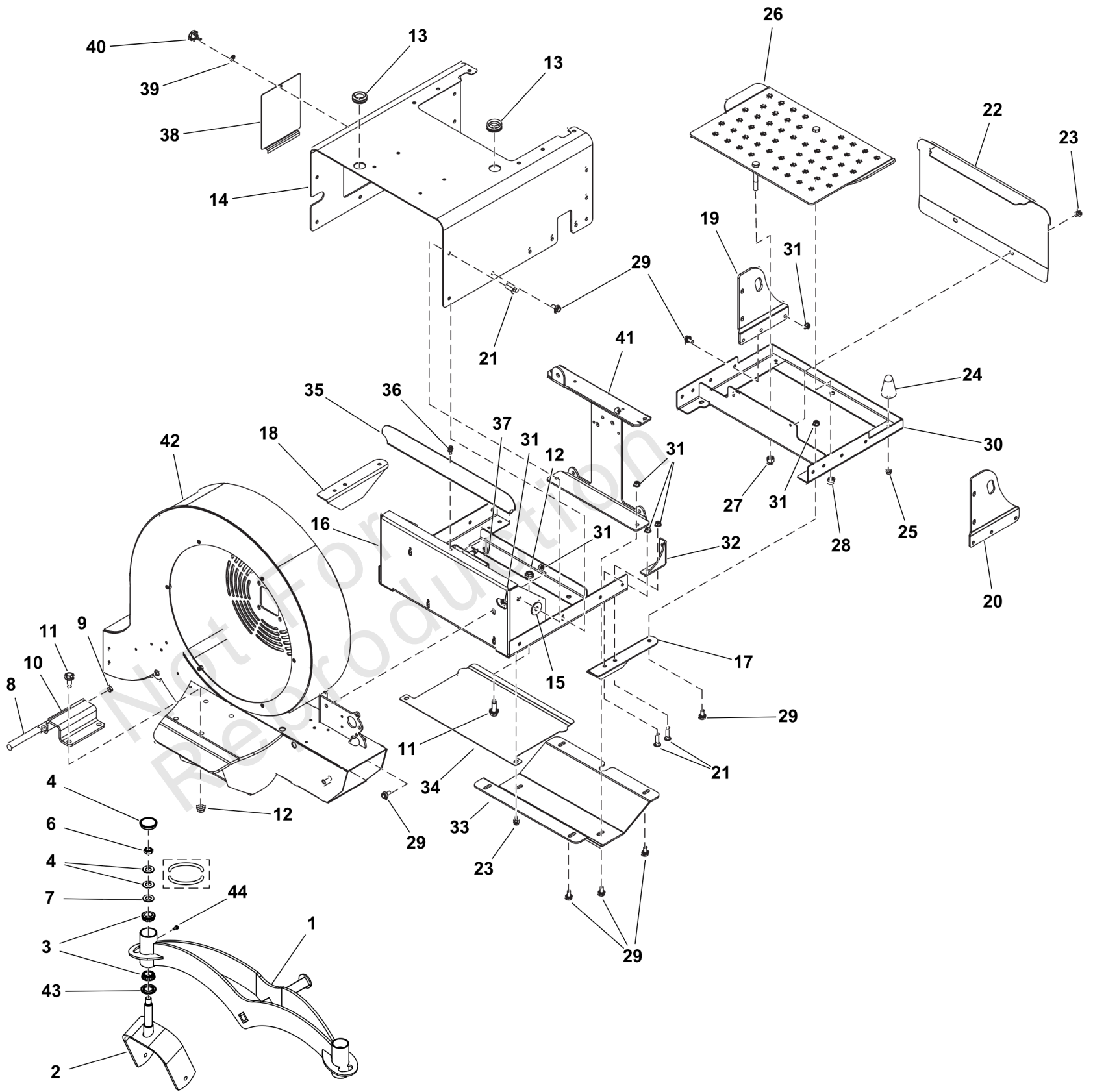
Footnotes:

(Key Ring for ignition keys)

Main Frame Group

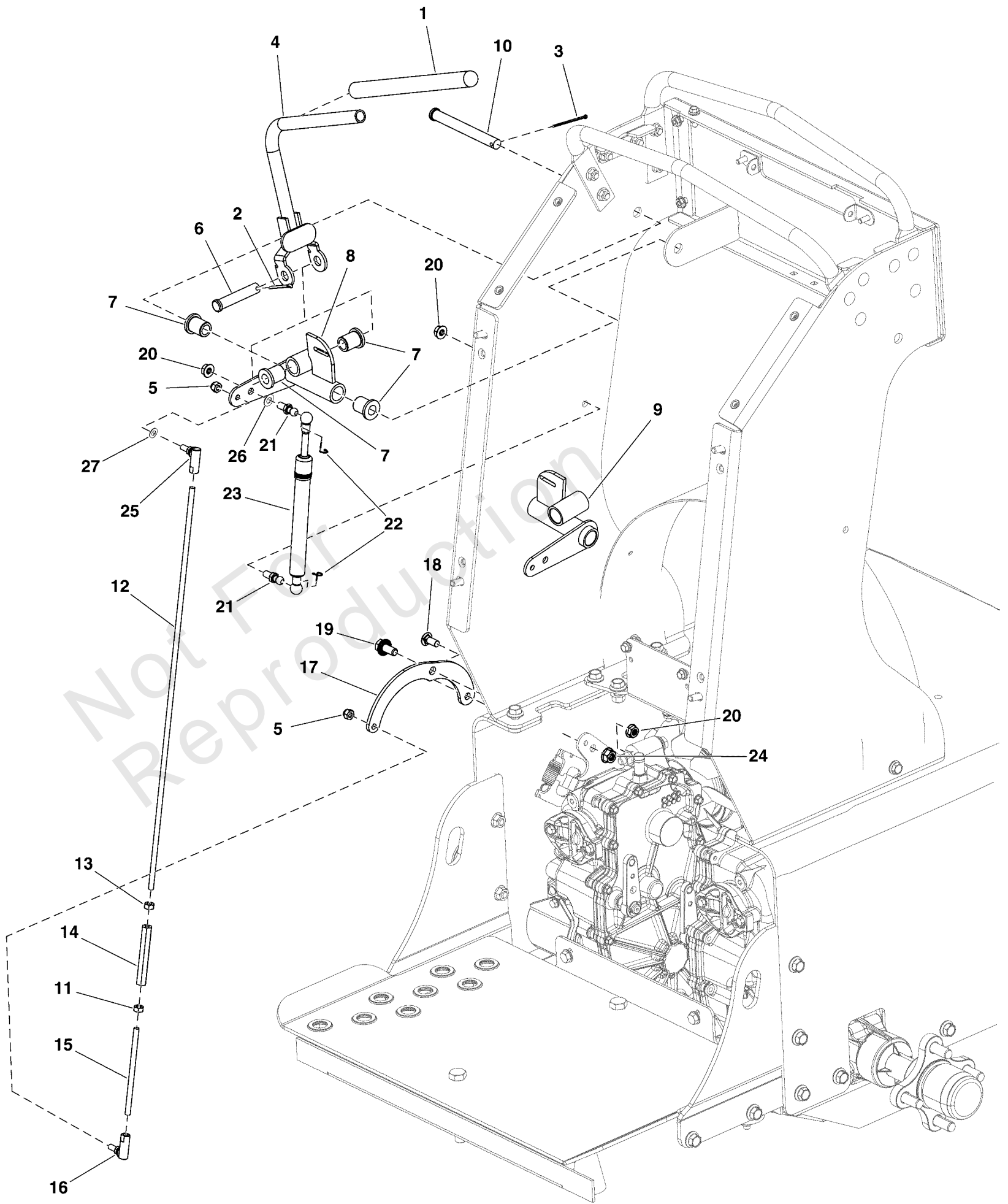
Note: Unless noted otherwise, use the standard torque specifications

Mfg. No: 5902135



Main Frame Group

| REF NO | PART NO | QTY | DESCRIPTION |
|--------|--------------|-----|---|
| 1 | 84008763 | 1 | PIVOT, Housing |
| 2 | 84008761 | 2 | YOKE, Caster |
| 3 | 5020884SM | 4 | BEARING, TAPERED ROLL |
| 4 | 5109845FS | 2 | CAP |
| 5 | 5025449SM | 4 | WASHER, BELLEVILLE |
| 6 | 5025448SM | 2 | NUT - 3/4-16 HEX JAM |
| 7 | 5025160SM | 2 | WASHER, 3/4" SAE |
| 8 | 5107356FS | 4 | CORD |
| 9 | ----- | 2 | RUBBER BAND -(Not a serviceable part.) |
| 10 | 5419091AIFS | 1 | PLATE |
| 11 | 5106786FS | 6 | BOLT |
| 12 | 5106787FS | 6 | NUT |
| 13 | 5106788FS | 2 | GROMMET, RUBBER |
| 14 | 84008759 | 1 | BOX, Motor |
| 15 | 5107390FS | 2 | SPACER |
| 16 | 5107547AFS | 1 | BOX, FRAME |
| 17 | 5107383AFS | 1 | BRACKET |
| 18 | 5107382AFS | 1 | BRACKET |
| 19 | 5418520AIFS | 1 | PLATE, TIE DOWN RH |
| 20 | 5418521AIFS | 1 | PLATE, LEFT |
| 21 | 5025390X10FS | 10 | BOLT |
| 22 | 5419301AIFS | 1 | PLATE |
| 23 | 5106898FS | 4 | SCREW |
| 24 | 5107206FS | 4 | BUMPER |
| 25 | 5025127SM | 4 | NUT, 5/16-18 HEX SERR |
| 26 | 5418525AFS | 1 | PLATFORM |
| 27 | 5025056FS | 1 | NUT |
| 28 | 5025646FS | 1 | NUT |
| 29 | 5106881FS | 28 | BOLT |
| 30 | 5107561AFS | 1 | BOX, FRAME |
| 31 | 5025666FS | 38 | NUT |
| 32 | 5107387AFS | 2 | SUPPORT, Transaxle |
| 33 | 5107384AFS | 1 | PLATE |
| 34 | 5107385AFS | 1 | GUARD |
| 35 | 5107386AFS | 1 | GUARD |
| 36 | 5106872FS | 2 | BOLT |
| 37 | 5025126FS | 2 | NUT |
| 38 | 5419192AIFS | 1 | PLATE |
| 39 | 5107350FS | 1 | WASHER |
| 40 | 5106913FS | 1 | CAPSCREW |
| 41 | 5418591AFS | 1 | TRANS, I-Beam |
| 42 | 5418642AIFS | 1 | HOUSING, BLOWER |
| 43 | 5021072SM | 2 | SEAL, GREASE |
| 44 | 5025457SM | 2 | BOLT - 1/4-28 X 1/2 |



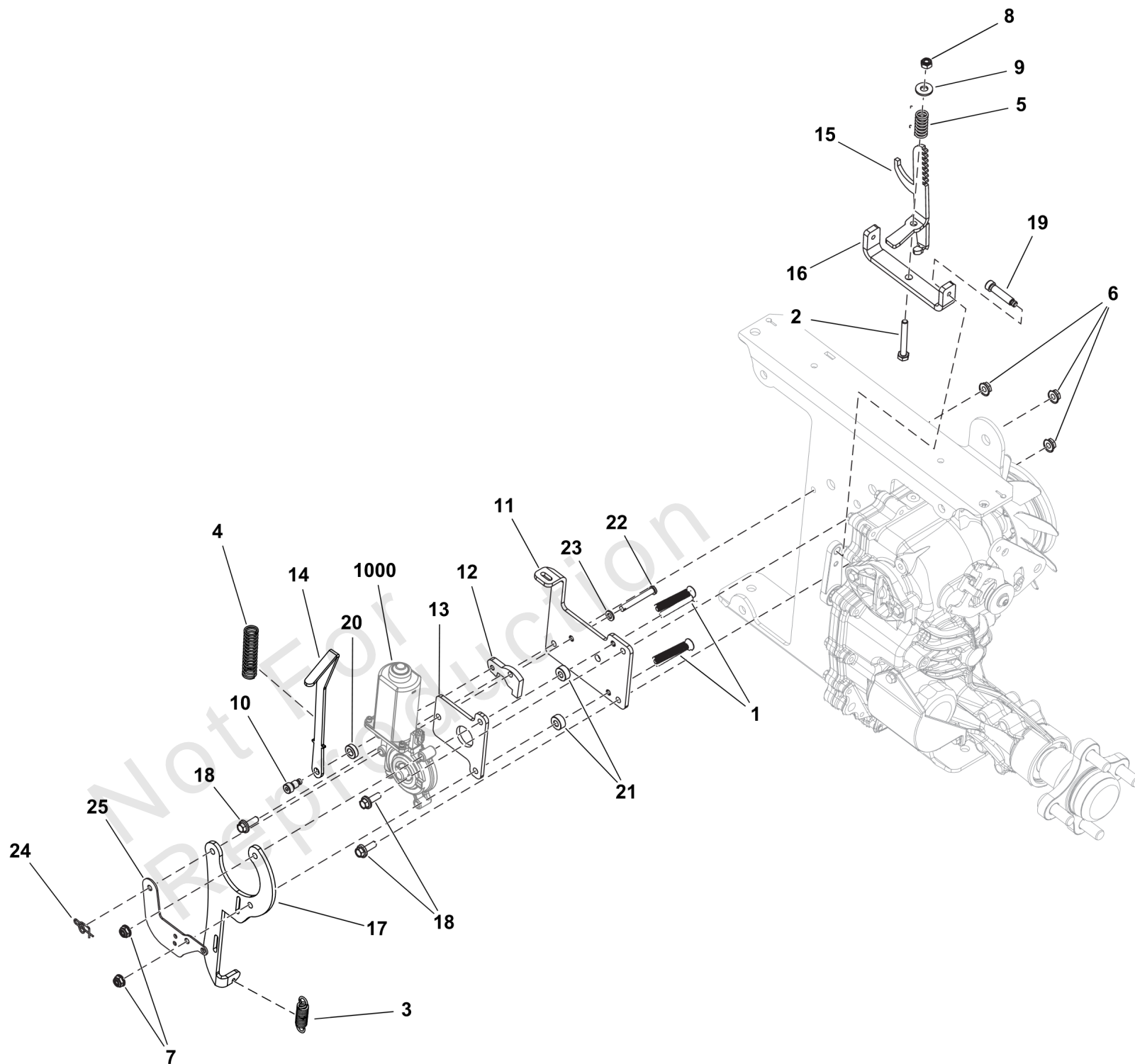
Motion Control Group

| REF NO | PART NO | QTY | DESCRIPTION |
|--------|-------------|-----|------------------------------|
| 1 | 5106940FS | 2 | GRIP |
| 2 | 5025203X12 | 2 | PIN, COTTER, 1/8 X 1 1/2, CZ |
| 3 | 5107351FS | 2 | PIN, COTTER |
| 4 | 5107368FS | 2 | CONTROL, HANDLE |
| 5 | 5106892FS | 4 | NUT |
| 6 | 5022044SM | 2 | PIN, CLEVIS, 1/2 X 2- |
| 7 | 5106943FS | 8 | BUSHING |
| 8 | 5107369FS | 1 | BRACKET, Control |
| 9 | 5107367FS | 1 | BRACKET |
| 10 | 5025456FS | 2 | PIN, CLEVIS |
| 11 | 7090095FS | 2 | NUT, 1/4 |
| 12 | 5107108FS | 2 | ROD |
| 13 | 5106858FS | 2 | NUT |
| 14 | 5106971FS | 2 | TUBE, CONNECTING |
| 15 | 5107303FS | 2 | ROD |
| 16 | 5106802FS | 2 | JOINT, BALL |
| 17 | 5107241FS | 2 | ARM, CONTROL |
| 18 | 5025145X6SM | 2 | BOLT, 5/16-18 X 3/4", |
| 19 | 5106881FS | 2 | BOLT |
| 20 | 5025127SM | 6 | NUT, 5/16-18 HEX SERR |
| 21 | 5100941SM | 4 | BALL STUD |
| 22 | 5106969FS | 4 | CLIP |
| 23 | 5107193FS | 2 | DAMPENER |
| 24 | 5025666FS | 2 | NUT |
| 25 | 5106803FS | 2 | JOINT, BALL |
| 26 | 703350 | 2 | WASHER |
| 27 | 703332 | 2 | WASHER |

Parking Brake Group S/N: 4002219159 and above

Note: Unless noted otherwise, use the standard torque specifications

Mfg. No: 5902135



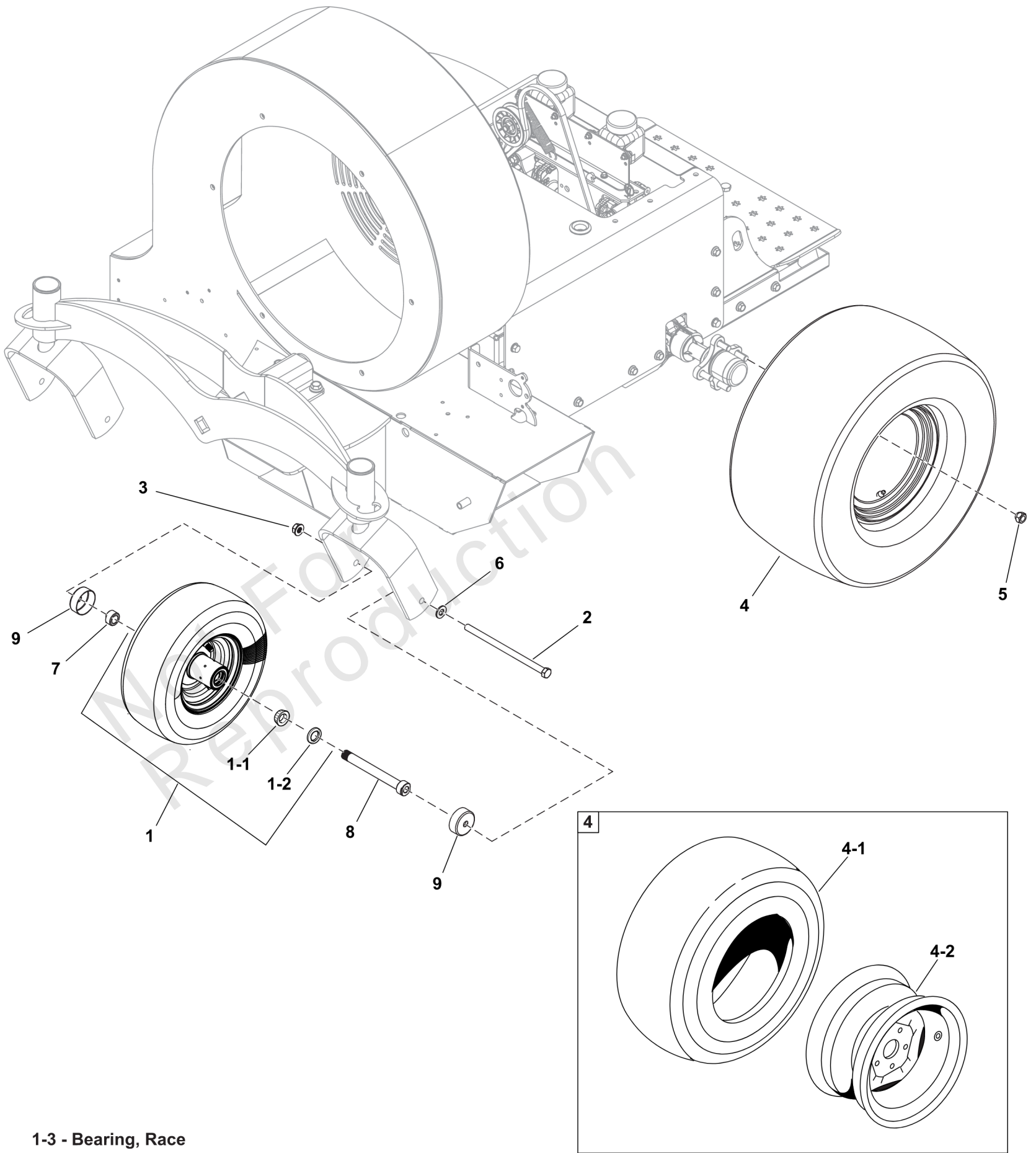
Parking Brake Group S/N: 4002219159 and above

| REF NO | PART NO | QTY | DESCRIPTION |
|--------|--------------|-----|----------------------------|
| 1 | 5106908FS | 2 | SCREW |
| 2 | 5025010X16FS | 1 | BOLT |
| 3 | 5106888FS | 1 | SPRING, EXTENSION |
| 4 | 5106910FS | 1 | SPRING, Compression |
| 5 | 5106911FS | 1 | SPRING, COMPRESSION |
| 6 | 5025126FS | 3 | NUT |
| 7 | 5025391FS | 2 | NUT |
| 8 | 5025095SM | 1 | NUT, 1/4-20 HEX NYLON |
| 9 | 5106815FS | 1 | WASHER |
| 10 | 5106912FS | 1 | BOLT |
| 11 | 5107321FS | 1 | PLATE |
| 12 | 5107322FS | 1 | PLATE |
| 13 | 5107324FS | 1 | PLATE |
| 14 | 5107328FS | 1 | PLATE |
| 15 | 5107325FS | 1 | BRACKET, BRAKE |
| 16 | 5110201FS | 1 | ARM, Lever |
| 17 | 5107327FS | 1 | PLATE, SWITCH |
| 18 | 5106872FS | 3 | BOLT |
| 19 | 5106941FS | 2 | BOLT |
| 20 | 84008621 | 1 | SPACER |
| 21 | 84008622 | 2 | SPACER |
| 22 | 84008623 | 1 | PIN, Clevis |
| 23 | 84008624 | 1 | WASHER, Flat |
| 24 | 703355 | 1 | COTTER PIN, 3/8 |
| 25 | 84008625 | 1 | PLATE, Switch |
| 1000 | ---- | 0 | Refer to: Electrical Group |

Wheel and Tire Group

Note: Unless noted otherwise, use the standard torque specifications

Mfg. No: 5902135



1-3 - Bearing, Race

Wheel and Tire Group

| REF NO | PART NO | QTY | DESCRIPTION |
|--------|--------------|-----|---|
| 1 | 5108751FS | 2 | TIRE ASSEMBLY |
| 1-1 | 5022631SX2 | 2 | BEARING, Tapered Roller -(SV - 2 per tire) |
| 1-2 | 5022631SX3 | 2 | SEAL, GREASE -(SV - 2 per tire) |
| 1-3 | 5022631SX4 | 2 | BEARING, RACE -(SV - 2 per tire) |
| 2 | 5025017X72YP | 2 | BOLT, 1/2-13 X 9 GD5 |
| 3 | 770225 | 2 | NUT |
| 4 | 84008750 | 2 | TIRE ASSEMBLY |
| 4-1 | 5107875X1 | 2 | TIRE, 22-11.00 X 10, 4-PLY (TIRE ONLY) -(One per tire) |
| 4-2 | ----- | 2 | WHEEL RIM -(Not available for sale. Refer to Complete Tire Assembly) |
| 5 | 5020601SM | 8 | NUT, 1/2-20, FOR WHEEL BOLT SILVER |
| 6 | 5025158SM | 2 | WASHER, 1/2" SAE |
| 7 | 5103650YP | 2 | NUT, BEARING |
| 8 | 5103649YP | 2 | BEARING ADJUSTER |
| 9 | 5103594YP | 4 | DEBRIS, COVER, WHEEL |

Not For Reproduction

Hardware Identification & Torque Specifications

| Torque Specification Chart | | | | | | | | |
|--|-----------|------|-----------|------|------------|------|------------|------|
| FOR STANDARD METRIC MACHINE HARDWARE (Tolerance ± 20%) | | | | | | | | |
| Property Class | 5.6 | | 8.8 | | 10.9 | | 12.9 | |
| | Class 5.6 | | Class 8.8 | | Class 10.9 | | Class 12.9 | |
| Size Of Hardware | in/lbs | Nm. | in/lbs | Nm. | in/lbs | Nm. | in/lbs | Nm. |
| | ft/lbs | | ft/lbs | | ft/lbs | | ft/lbs | |
| M3 | 5.88 | .56 | 13.44 | 1.28 | 19.2 | 1.80 | 22.92 | 2.15 |
| M4 | 13.44 | 1.28 | 30.72 | 2.90 | 43.44 | 4.10 | 52.56 | 4.95 |
| M5 | 26.4 | 2.50 | 60.96 | 5.75 | 5.97 | 8.10 | 7.15 | 9.7 |
| M6 | 44.64 | 4.3 | 7.3 | 9.9 | 10.3 | 14 | 12.1 | 16.5 |
| M7 | 5.2 | 7.1 | 12.1 | 16.5 | 16.9 | 23 | 19.9 | 27 |
| M8 | 7.7 | 10.5 | 17.7 | 24 | 25 | 34 | 29 | 40 |
| M10 | 15 | 21 | 35 | 48 | 50 | 67 | 59 | 81 |
| M12 | 26 | 36 | 61 | 83 | 86.2 | 117 | 103 | 140 |
| M14 | 42 | 58 | 101 | 132 | 136 | 185 | 162 | 220 |
| M16 | 64 | 88 | 147 | 200 | 210 | 285 | 250 | 340 |
| M18 | 89 | 121 | 202 | 275 | 287 | 390 | 346 | 470 |
| M20 | 126 | 171 | 290 | 390 | 405 | 550 | 486 | 660 |
| M22 | 169 | 230 | 390 | 530 | 559 | 745 | 656 | 890 |
| M24 | 217 | 295 | 497 | 375 | 708 | 960 | 840 | 1140 |
| M27 | 320 | 435 | 733 | 995 | 1032 | 1400 | 1239 | 1680 |
| M30 | 435 | 590 | 995 | 1350 | 1401 | 1900 | 1681 | 2280 |
| M33 | 590 | 800 | 1349 | 1830 | 1902 | 2580 | 2278 | 3090 |
| M36 | 759 | 1030 | 1740 | 2360 | 2441 | 3310 | 2935 | 3980 |
| M39 | 988 | 1340 | 2249 | 3050 | 3163 | 4290 | 3798 | 5150 |

| Torque Specification Chart | | | | | | |
|---|-------------|-------|-------------|-------|-------------|---------|
| FOR STANDARD MACHINE HARDWARE (Tolerance ± 20%) | | | | | | |
| Hardware Grade | No Marks | | SAE Grade 5 | | SAE Grade 8 | |
| | SAE Grade 2 | | SAE Grade 5 | | SAE Grade 8 | |
| Size Of Hardware | in/lbs | Nm. | in/lbs | Nm. | in/lbs | Nm. |
| | ft/lbs | | ft/lbs | | ft/lbs | |
| 8-32 | 19 | 2.1 | 30 | 3.4 | 41 | 4.6 |
| 8-36 | 20 | 2.3 | 31 | 3.5 | 43 | 4.9 |
| 10-24 | 27 | 3.1 | 43 | 4.9 | 60 | 6.8 |
| 10-32 | 31 | 3.5 | 49 | 5.5 | 68 | 7.7 |
| 1/4-20 | 66 | 7.6 | 8 | 10.9 | 12 | 16.3 |
| 1/4-28 | 76 | 8.6 | 10 | 13.6 | 14 | 19.0 |
| 5/16-18 | 11 | 15.0 | 17 | 23.1 | 25 | 34.0 |
| 5/16-24 | 12 | 16.3 | 19 | 25.8 | 29 | 34.0 |
| 3/8-16 | 20 | 27.2 | 30 | 40.8 | 45 | 61.2 |
| 3/8-24 | 23 | 31.3 | 35 | 47.6 | 50 | 68.0 |
| 7/16-14 | 30 | 40.8 | 50 | 68.0 | 70 | 95.2 |
| 7/16-20 | 35 | 47.6 | 55 | 74.8 | 80 | 108.8 |
| 1/2-13 | 50 | 68.0 | 75 | 102.0 | 110 | 149.6 |
| 1/2-20 | 55 | 74.8 | 90 | 122.4 | 120 | 163.2 |
| 9/16-12 | 65 | 88.4 | 110 | 149.6 | 150 | 204.0 |
| 9/16-18 | 75 | 102.0 | 120 | 163.2 | 170 | 231.2 |
| 5/8-11 | 90 | 122.4 | 150 | 204.0 | 220 | 299.2 |
| 5/8-18 | 100 | 136 | 180 | 244.8 | 240 | 326.4 |
| 3/4-10 | 160 | 217.6 | 260 | 353.6 | 386 | 525.0 |
| 3/4-16 | 180 | 244.8 | 300 | 408.0 | 420 | 571.2 |
| 7/8-9 | 140 | 190.4 | 400 | 544.0 | 600 | 816.0 |
| 7/8-14 | 155 | 210.8 | 440 | 598.4 | 660 | 897.6 |
| 1-8 | 220 | 299.2 | 580 | 788.8 | 900 | 1,244.0 |
| 1-12 | 240 | 326.4 | 640 | 870.4 | 1,000 | 1,360.0 |

The guides and ruler furnished below are designed to help you select the appropriate hardware.



Nut, M8

Thread Diameter (mm)

Inside Diameter (in) Threads per inch

Nut, 1/2-16



Screw, M8- 1.25 x 25

Thread Diameter (mm) Distance between threads (mm) Body Length (mm)

Body Diameter Threads per inch Body Length (in)

Screw, 1/2- 16 x 2



Standard Hardware Sizing

When a washer or nut is identified as 1/2" (M8), this is the *Nominal size*, meaning the *inside diameter* is 1/2 inch (8mm metric thread diameter); if a second number is present it represents the *threads per inch* (distance between threads).

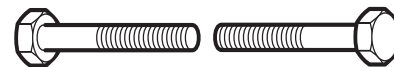
When bolt or capscrew is identified as 1/2 - 16 x 2" (M8 - 1.25 x 50), this means the *Nominal size*, or body diameter is 1/2 inch (8mm metric thread diameter), the second number, 16, represents the *threads per inch*, (*distance between threads*). The final number is the body length of the bolt or screw, 2 inches (50mm).

NOTES

- These torque values are to be used for all hardware excluding: locknuts, self-tapping screws, thread forming screws, sheet metal screws and socket head setscrews.
- Recommended seating torque values for locknuts:
 - for prevailing torque locknuts - use 65% of grade 5 torques.
 - for flange whizlock nuts and screws - use 135% of grade 5 torques.
- Unless otherwise noted on assembly drawings, all torque values must meet this specification.

Common Hardware Types

Hex Head Capscrew



Washer



Carriage Bolt



Hex Nut

Wrench & Fastener Size Guide

| | | | | |
|----------------------------------|----------------------------------|----------------------------------|--|---------------------------------|
| | | | | |
| 1/4" Bolt or Nut Wrench—7/16" | 5/16" Bolt or Nut Wrench—1/2" | 3/8" Bolt or Nut Wrench—9/16" | 7/16" Bolt or Nut Wrench (Bolt)—5/8" Wrench (Nut)—11/16" | 1/2" Bolt or Nut Wrench—3/4" |
| M6 Bolt or Nut Wrench—10mm | M8 Bolt or Nut Wrench—13mm | M10 Bolt or Nut Wrench—17mm | M12 Bolt or Nut Wrench—19mm | M14 Bolt or Nut Wrench—22mm |

